

FILE NO.

Standard-SSV

REVISIONS			
REV	DESCRIPTION	DWGN	CHK APP
8	REWORK TO AUTOCAD	JDA	JDM N/A
	DATE: 3/17/2006		

FOUNDATION AND ANCHOR TOLERANCES
ALL FOUNDATIONS

1. CONCRETE DIMENSIONS - PLUS OR MINUS 1" (25mm).
2. DEPTH OF FOUNDATION - PLUS 3" (76mm) OR MINUS 0".
3. DRILLED FOUNDATIONS OUT OF PLUMB - 1.0 DEGREE.
4. REINFORCING STEEL PLACEMENT - PER A.C.I. 301.
5. PROJECTION OF EMBEDMENTS - PLUS OR MINUS 1/8" (3mm).
6. VERTICAL EMBEDMENTS OUT OF PLUMB - 0.5 DEGREE.

ANCHOR BOLTS

7. MAXIMUM DISTANCE FROM CENTERLINE OF ANCHOR BOLTS TO CENTERLINE OF FOUNDATION - 1/24 OF PIER DIAMETER UP TO A MAXIMUM OF 2" (51mm).
8. ANCHOR BOLT SPACING - 1/16" (2mm).
9. ANCHOR BOLT CIRCLE ORIENTATION - 0.25 DEGREE.
10. ANCHOR BOLT CIRCLE DIAMETER - PLUS OR MINUS 1/16" (2mm).

SELF-SUPPORTING TOWERS

11. FACE SPREAD DIMENSION CENTER TO CENTER OF ANCHOR BOLT CIRCLES - PLUS OR MINUS 1/16" (2mm) OR 1/16" (2mm) PER 20 FT. (6m) OF FACE SPREAD.
12. MAXIMUM DIFFERENCE BETWEEN ANY TWO FOUNDATION ELEVATIONS - 1/2" (13mm).

GUYED TOWERS

13. GUY RADIUS - PLUS OR MINUS 5% OF DISTANCE SPECIFIED.
14. ANCHOR ELEVATION - PLUS OR MINUS 5% OF GUY RADIUS.
15. ANCHOR ALIGNMENT (PERPENDICULAR TO GUY RADIUS) - 1.0 DEGREE.
16. ANCHOR ROD SLOPE - PLUS OR MINUS 1.0 DEGREE.
17. ANCHOR ROD ALIGNMENT WITH GUY RADIUS PLUS OR MINUS 1.0 DEGREE.
18. ANCHOR HEAD OUT OF PLUMB - 1.0 DEGREE.
19. GUY INITIAL TENSION - PLUS OR MINUS 10% OF TENSION SPECIFIED.

NOTE: TOLERANCES IN NOTES 13 AND 14 CAN NOT OCCUR SIMULTANEOUSLY

WARNING!!!

AFTER ANCHOR BOLTS ARE INSTALLED IN CONCRETE HAS TAKEN ITS INITIAL SET, ANCHOR BOLTS MUST NOT BE MOVED, BENT OR REALIGNED IN ANY MANNER. A NUT LOCKING DEVICE MUST BE INSTALLED ON ALL ANCHOR BOLTS.

DWG REFERENCE



6718 WEST PLANK ROAD
 PEORIA, IL 61604
 TOLL FREE 800-727-ROHN

THIS DRAWING IS THE PROPERTY OF ROHN. IT IS NOT TO BE REPRODUCED, COPIED OR TRACED IN WHOLE OR IN PART WITHOUT OUR WRITTEN CONSENT.

FOUNDATION & ANCHOR TOLERANCE

DWGN:	CHKD:	DATE:
CSR	KTL	Sep/25/1987

ENGR:	XK
-------	----

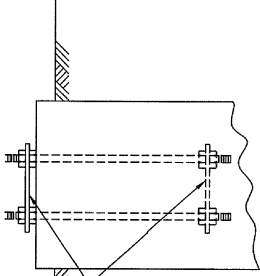
DRAWING NO:	REV:
A810214	8

FILE NO.

Standard-SSV

REVISIONS		DWGN	CHK	APP
REV	DESCRIPTION			
4	UPDATED AND REWORN	WES	KTL	HAA
5	DATE: 10/17/2005 REVISED NOTES & TEMPLATE INFO	JMS	KTL	HAA
	DATE: 3/10/2006			

ANCHOR BOLT SETTING
TEMPLATES (SEE CHART
FOR PART NO. REQ'D.)
REMOVE UPPER TEMPLATE
BEFORE INSTALLING
TOWER.

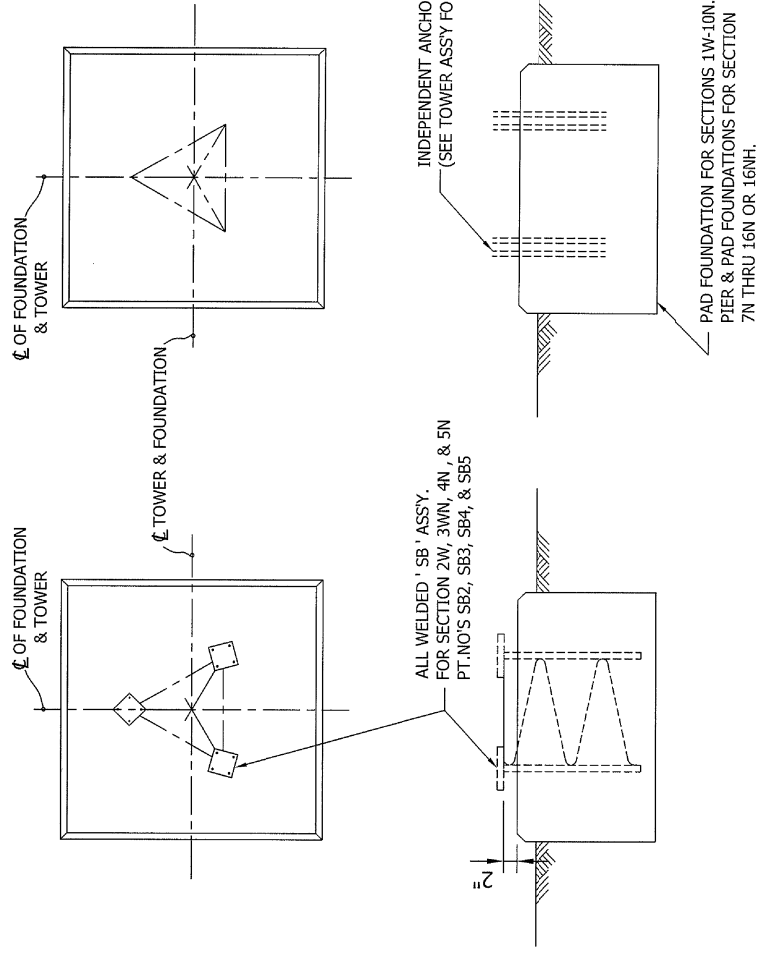


NOTES:

1. IT IS THE RESPONSIBILITY OF THE FOUNDATION CONTRACTOR TO VERIFY THAT THE CORRECT SETTING TEMPLATE & FOUNDATION DWG. ARE BEING USED.
2. CHECK NUMBER & SIZE OF ANCHOR BOLTS, SPACING, & BOLT CIRCLE DIA. ON TEMPLATE AGAINST ANCHOR BOLT LAYOUT DRAWING BEFORE INSTALLATION.
3. BOLT TEMPLATES ARE AVAILABLE FOR SECTIONS 6N THRU 16N OR 16NH.
4. ALLOW FOR DRAINAGE OF ALL PIPE LEG TOWER SECTION.
5. PART NO. IN CHART AT UPPER LEFT CONSISTS OF 12 ANCHOR BOLTS & 6 TEMPLATES.

ANCHOR BOLT TEMPLATE INFORMATION

ASSEMBLY	TEMPLATE	PT. NO	ANCHOR BOLTS	BASE FLANGE	TOWER BASE SECTION
6NABDST	(3)VL25T	BOTTOM	(1/2 REQ'D)	SIZE	(SEE TOWER ASSY. FOR EXACT P/N)
10NABDST	(3)VL26T	(3)VL26B	3/4 X 48"	5 X 5 X 3/4"	6N, 7N, 8N, 9N, 9NH
11NABDST1	(3)VL27T	(3)VL27B	7/8 X 42"	6 X 6 X 3/4"	10N, 10NH
15NHABDST1	(3)VL28T	(3)VL28B	1 X 70"	7 X 7 X 1"	11N, 12N, 12NH, 13N, 13NH
15NHABDST			1 X 78"	9 1/2 X 9 1/2 X 1 1/4"	14N, 14NH, 15N, 15NH, 16N, 16NH



NOTE: SEE DWG. NO. B740973 FOR TEMPLATE FABRICATION DETAILS.
NOTE: SEE DWG. NO. B050439 FOR TEMPLATE DETAILS.



6718 WEST PLANK ROAD
PEORIA, IL 61604
TOLL FREE 800-727-ROHN

THIS DRAWING IS THE PROPERTY OF ROHN. IT IS NOT TO BE REPRODUCED, COPIED OR TRACED IN WHOLE OR IN PART WITHOUT OUR WRITTEN CONSENT.

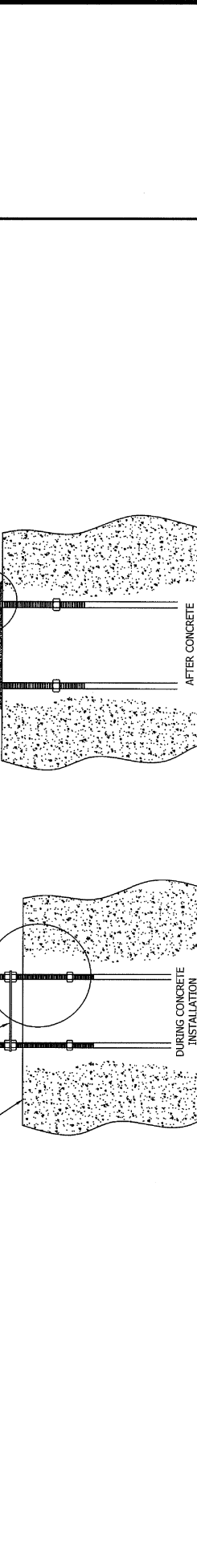
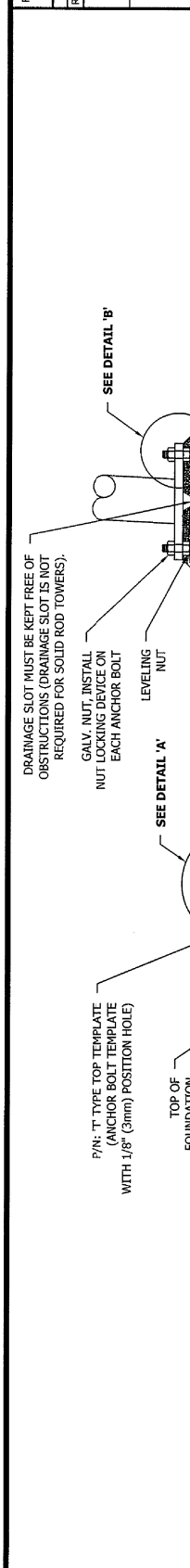
ANCHOR BOLT LAYOUT
TEMPLATE INFO & SHORT BASE DETAILS

DWGN: OH
CHKD: WDU
DATE: Feb/14/1975

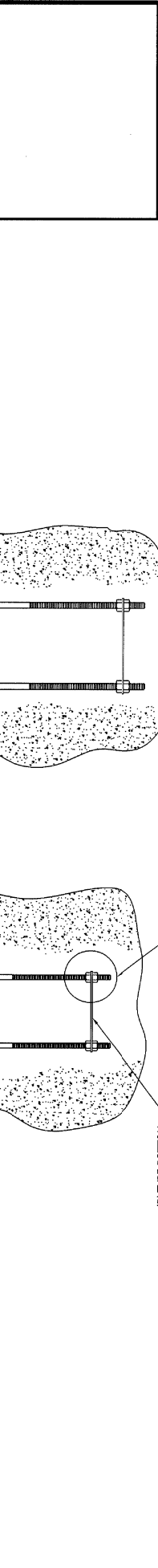
ENGR: CW

DRAWING NO: CU730104
REV: 5

REVISIONS		DWN	CHK	APP
REV.	DESCRIPTION			
2	UPDATE TO NEW STANDARDS	JEC	KTL	DWG
	DATE: 11/29/11			



ELEVATION VIEWS



ANCHOR BOLT INSTALLATION TOLERANCES

- FACE SPREAD DIMENSION (CENTER-TO-CENTER OF ANCHOR BOLT CIRCLES - PLUS OR MINUS 1/16" (2mm) OR 1/16 (2mm) PER 20 FT. (6M) OF FACE SPREAD.
- MAXIMUM DIFFERENCE BETWEEN ANY TWO FOUNDATION ELEVATIONS - 1/2" (13mm).
- CONCRETE DIMENSIONS - PLUS OR MINUS 1" (25mm).
- DEPTH OF FOUNDATION - PLUS 3" (76mm) OR MINUS 0".
- PLACING CONCRETE AS CLOSE TO FLUSH AS POSSIBLE.
- REINFORCING BARS CORNER PLACEMENT - PLUS OR MINUS 301.
- PROJECTION OF EMBEDMENTS - PLUS OR MINUS 1/8" (3mm).
- VERTICAL EMBEDMENTS OUT OF PLUMB - 1/2 DEGREE TO CENTERLINE OF FOUNDATION - 1/24 OF PIER DIAMETER UP TO A MAXIMUM OF 2" (51mm).
- ANCHOR BOLT SPACING - 1/16" (2mm).
- ANCHOR BOLT CIRCLE ORIENTATION - 1/4 DEGREE.
- ANCHOR BOLT CIRCLE DIAMETER - PLUS OR MINUS 1/16" (2mm).

III. WARNING III

ENSURE DIMENSION (P) IS CORRECT ON ALL FACES PRIOR TO PLACING CONCRETE AND THAT THE NUMBER AND SIZE OF ANCHOR BOLTS MATCHES THE STRUCTURE DRAWING.

AFTER ANCHOR BOLTS ARE INSTALLED, CONCRETE HAS TAKEN ITS INITIAL SET, ANCHOR BOLTS MUST NOT BE TOWER, BENT OR REALIGNED IN ANY MANNER. A NUT LOCKING DEVICE MUST BE INSTALLED ON ALL ANCHOR BOLTS.

NOTES

- ALL ANCHOR BOLTS MUST MEET OR EXCEED REQUIREMENTS OF A.S.T.M. F1554-S2, S5 GRADE 105.
- GROUT TO BE 5000 PSI MIN. ULTIMATE STRENGTH/7 DAY NON-SHRINKING AND NON-METALLIC.
- SPECIAL CARE MUST BE TAKEN WHEN LIFTING ANCHOR BOLT CLUSTER, IN ORDER TO PREVENT ANCHOR BOLT TEMPLATE DISTORTION.
- ANCHOR BOLT ASSEMBLY MUST BE ADEQUATELY SUPPORTED AND RESTRAINED TO PREVENT MOVEMENT OF THE CLUSTER DURING CONCRETE INSTALLATION.
- IT IS THE RESPONSIBILITY OF THE FOUNDATION CONTRACTOR TO VERIFY THAT THE CORRECT ANCHOR BOLT TEMPLATE AND FOUNDATION SHOWN ON RESPECTIVE SITE DRAWINGS ARE BEING USED.
- IT IS THE RESPONSIBILITY OF THE FOUNDATION DESIGN ENGINEER TO INSURE THAT THE ANCHORAGES PROVIDED ARE COMPATIBLE WITH THE PROPOSED FOUNDATION DESIGN AND THAT THE CAPACITIES OF THE ANCHORAGES ARE NOT LIMITED BY THE STRENGTH OF THE FOUNDATIONS.

GROUT MAY BE ELIMINATED IF THE DISTANCE BETWEEN TOP OF CONCRETE AND BOTTOM OF LEVELING NUT IS LESS THAN OR EQUAL TO ANCHOR BOLT DIA.

ANCHOR BOLTS LAYOUT FOR 5/8", 3/4", 7/8", & 1" ANCHOR BOLTS

DWN: MF
ENG'R: HA
DATE: 09/07/05
SHEET #: 1 OF 1
DRAWING NO: B050439
REV: 2

ROHN PRODUCTS
PO BOX 5999
PEORIA, IL 61601-5999
TOLL FREE 800-727-ROHN
THIS DRAWING IS THE PROPERTY OF ROHN. IT IS NOT TO BE REPRODUCED, COPIED OR TRACED IN WHOLE OR IN PART WITHOUT ROHN'S WRITTEN CONSENT.